



High-rise redevelopment

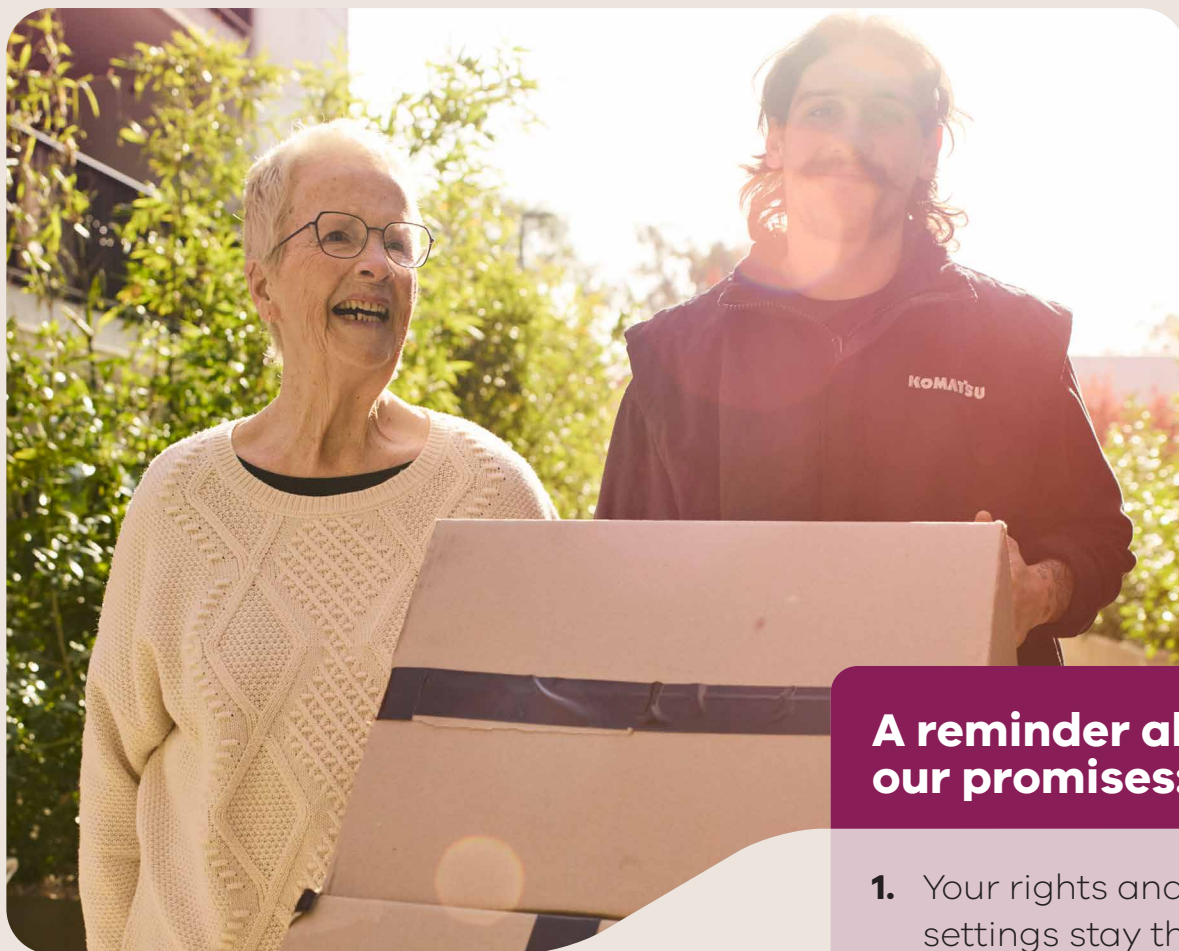
Relocations update

Relocating resident Darko talks about his relocation from Richmond high-rise.

June 2026

Information for residents of

- 150 Inkerman Street, St Kilda
- 150 Victoria Avenue, Albert Park
- 25 and 27 King Street, Prahran



A reminder about our promises:

1. Your rights and rent settings stay the same, acknowledging you may also be eligible for Commonwealth Rent Assistance
2. Your rent will be set the same way for as long as you choose to stay in the new home
3. You can choose to stay in your new home
4. You also have the option to return to your current neighbourhood when the development is complete

Find out more on page 14

Getting to know residents on the relocation journey

In January this year, we told residents we are redeveloping older high-rise buildings at Albert Park, Prahran, and St Kilda. We're building better, safer and more comfortable homes for current and future residents.

It's still early days, but we'll keep sharing information about the relocation process, new homes and help available along the way.

Front cover image: Relocating resident Darko talks about his relocation from Richmond high-rise.

We listened so we can be ready to help

In February, we surveyed relocating residents to help us with early planning and making sure the right supports are available. More than 300 residents completed our survey and this information means we're now ready to help you.

We heard many residents are feeling positive about the move.



Based on what we heard we've:

- set up Community Connector Committees at each building so residents can raise issues, ask questions and share information with their communities
- created printed materials with more information about the moving process, timelines and new homes nearby, including images and floorplans
- worked with our health service partners to make sure they are ready to help residents with ongoing connection to important health services, accessibility needs and getting ready for the move.



More than **70% feel ready to move to new homes** starting from July 2026



More than **80% are excited to live in more modern buildings**



New homes at South Yarra and Prahran will be finished in late 2026.

Designed to support a safe and well-connected community, they're close to shops and services with public transport on the doorstep.

There will be a multi-purpose community room and other spaces that might be used for a café or services. The buildings are set within quality landscaped gardens and the community housing tenancy manager will also be located on site.

New homes include features not available in older high-rise buildings like private balconies and laundries, modern kitchens and built in robes.

Wider doorways and corridors, open plan living and kitchen spaces as well as walk-in showers make it easier for people with mobility aids to move around.

Safety and security are supported by intercoms in every home to control who can access the building and individual floors.

They are designed to be easy to heat and cool year-round with double glazed windows, good natural light and airflow and high-performance insulation.




New homes at Port Melbourne will be finished in late 2026.

Designed to support a safe and well-connected community, their location also supports sea views just a short walk to the beach.

There will be indoor and outdoor shared spaces, a beautifully landscaped civic park as well as shared growing spaces.

The tenancy manager will also be located on site.





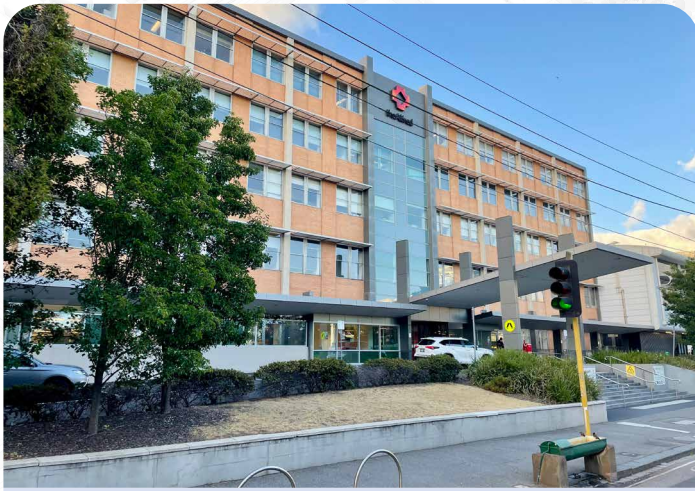
Improvements in the new homes not found in older high-rises include private outdoor space, quality kitchen appliances, private laundries and good built-in storage space.

Features like wider doorways and corridors as well as open plan living spaces and walk-in showers with adjustable shower heads make it easier for people using mobility aids.

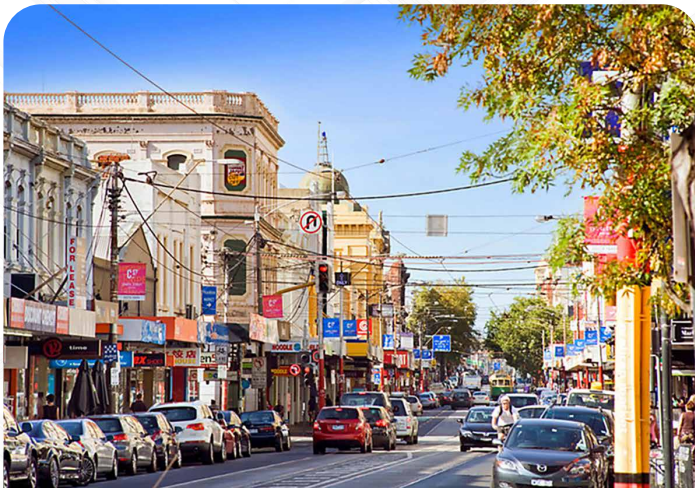
They are designed to be easy to heat and cool year-round with double glazed windows, good natural light and airflow and high-performance insulation.

Video and voice control intercoms in every home support safety and security and residents can control who enters the buildings.

Shops, services and transport near you



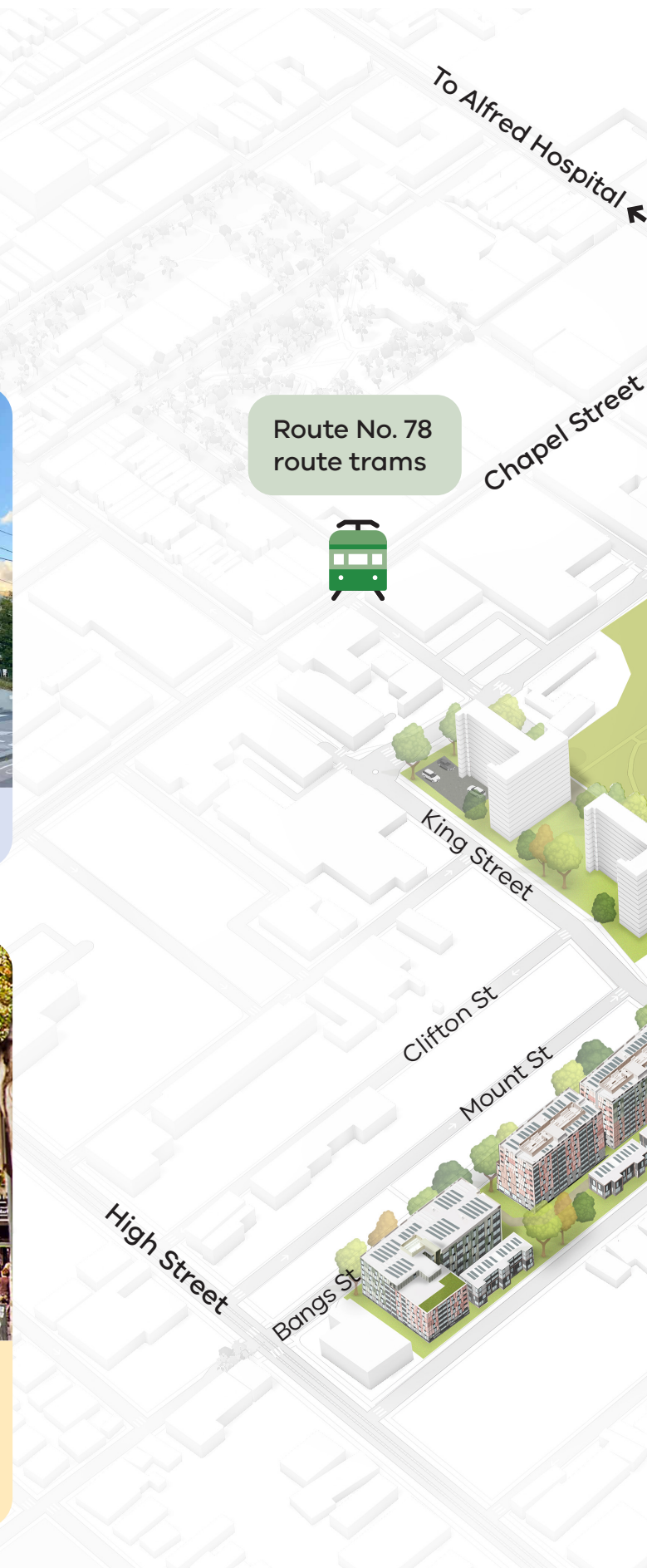
A short tram ride to the Alfred Hospital



Close to Chapel Street shopping precinct

- Doctor
- Chemist
- Supermarket
- Post office

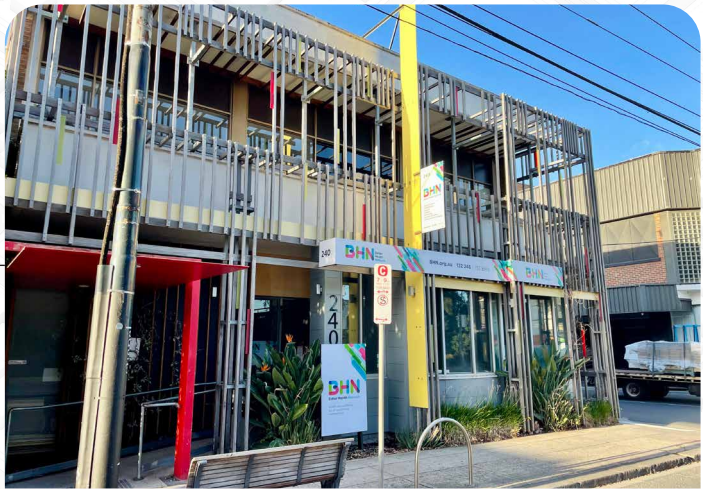
Route No. 78 route trams





Route 604 Bus
to Anzac Station

Route No. 72 on Malvern Road



The Better Health Network next door
on Malvern Road



Scenic beach front bus 236

Three minute walk to the beach

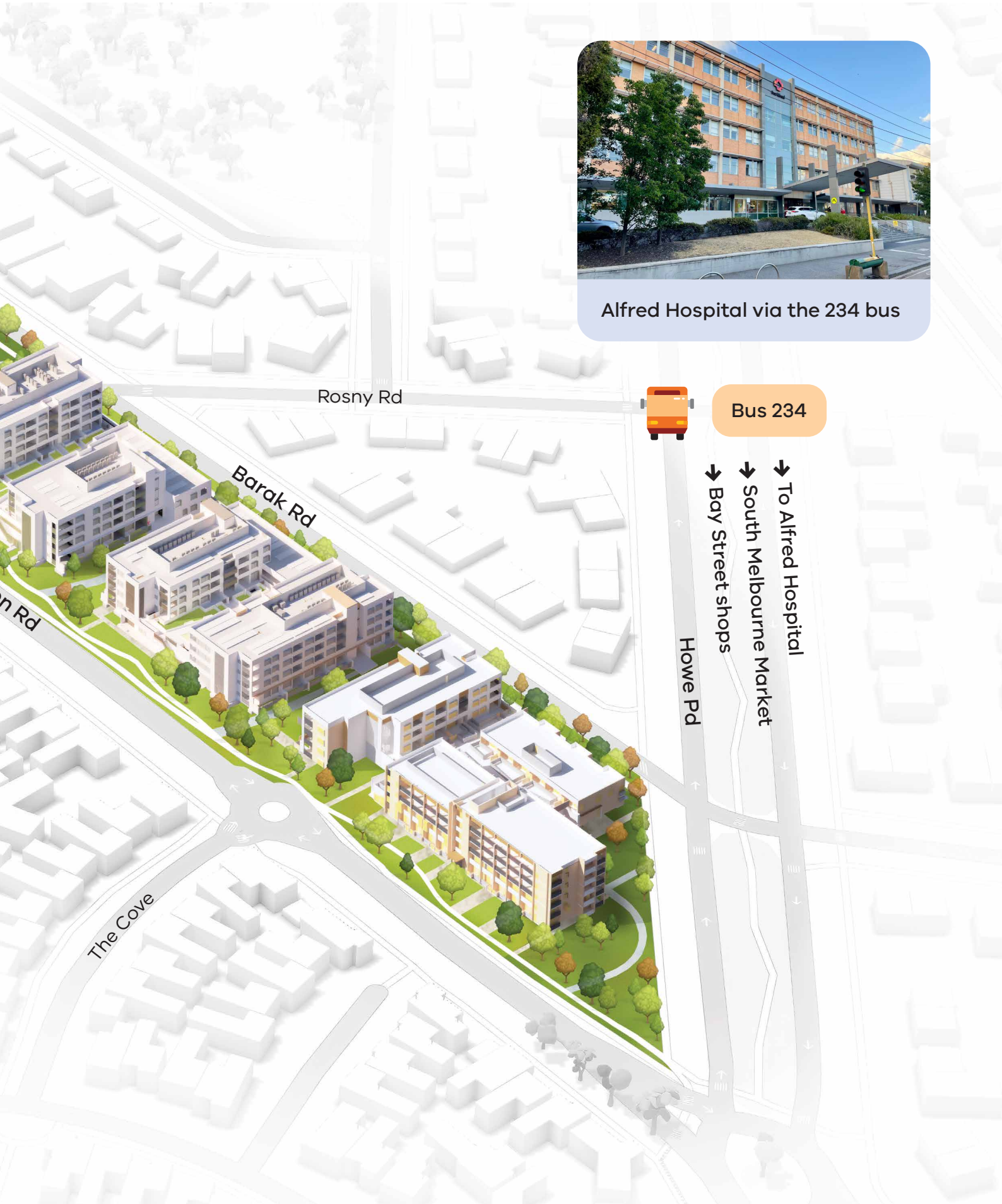
Shops, services and transport near you



- A short bus ride on the 234 bus to the Bay Street shopping precinct
- Doctor
- Chemist
- Supermarket
- Post office



Alfred Hospital via the 234 bus



Rosny Rd

Barak Rd

n Rd

The Cove

Howe Pd



Bus 234

- ↖ To Alfred Hospital
- ↙ South Melbourne Market
- ↘ Bay Street shops

Richmond residents who relocated last year are happy to share their experiences.

"It was fantastically organised. So easy. There was no stress, no anxiety about it. I praise the relocations team."

"They organised the removalist on a particular date that suited me. They accommodated all my dates."

"They gave me boxes, bubble wrap, rolls of sticky tape and [were] very generous about leaving some unwanted furniture in my old apartment. It did not cost me anything."

Darko



"It's not that hard. The relocation team helped me with everything. I didn't need to do anything. I did not spend a cent."

Tony

"I am very happy with the new house. It caters to older people, so it's very accessible. The bathroom has railings and it's also a bigger space. We have a big balcony where I get a lot of sunlight, and I can also hang my laundry."

Xiu



Better Health Network here to help

Better Health Network (BHN) work together with our relocations team and are here to provide extra personal support for relocating residents.

What can BHN help with?

- Connecting with health or wellbeing services
- Help viewing and deciding on suitability of new homes
- Assessing and organising modifications or mobility aids in your new home
- Accessing appliances or furniture needed in your new home e.g., washing machines
- Help with packing and unpacking
- Help to stay connected to things you love and need
- Referrals and support navigating MyAgedCare, NDIS or care finder services

BHN bring years of experience working with communities in Albert Park, Prahran and St Kilda.

Matt Salen of BHN explains they started the support program in 2024 to help residents moving from 259 Malvern Road.

"We started really slowly just getting to know residents and working out what supports and information they needed. We want to get to know people before we move to the practical things."

"We like to make connections, whether it's sharing language, or life experiences. I meet such a variety of people, and I've learnt things in many different languages!"

"It feels so good to know you've helped people ... seeing someone comfortable, happy and settled in their new home."



BHN are available to help:

Monday to Friday

9am to 5pm






 132 246

 betterhomesbetterhealth@bhn.org.au



Practical help and reminders

When it's time to move:

-  We'll pay for your move
-  We'll book removalists
-  We'll give you boxes and packing materials
-  We'll help you pack and unpack if needed
-  We'll make sure you stay connected to health and support services

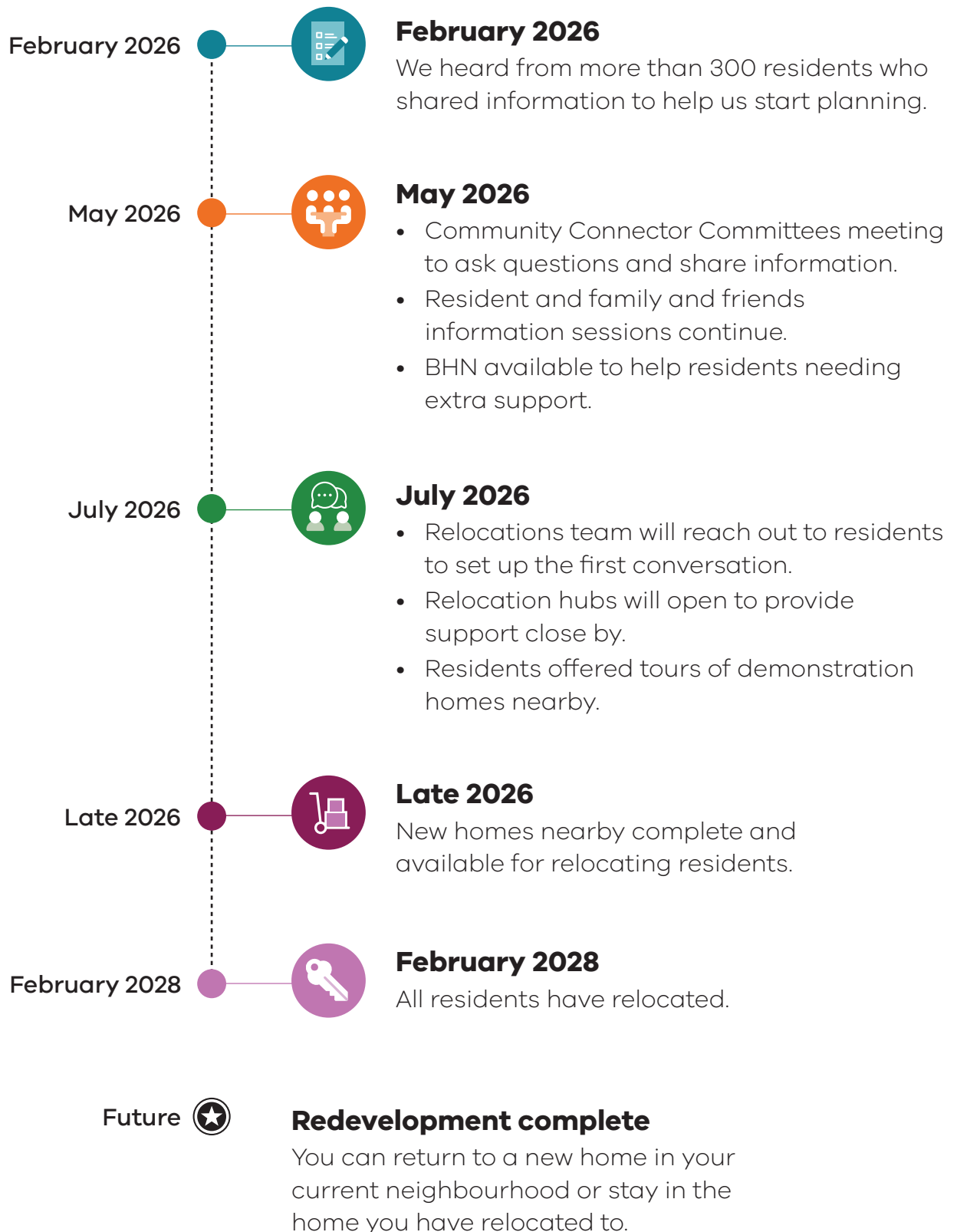
Good things to know:

- 1.** Your rights and rent settings stay the same, acknowledging you may also be eligible for Commonwealth Rent Assistance
- 2.** Your rent will be set the same way for as long as you choose to stay in the new home
- 3.** You can choose to stay in your new home
- 4.** You also have the option to return to your current neighbourhood when the development is complete



What happens next?

Here's where we are now and what to expect in future stages.




Who to talk to


Homes Victoria

Homes Victoria is part of the Department of Families, Fairness and Housing. We manage public housing across Victoria.

We also manage the redevelopment of older high-rise buildings.

If you're not sure who to contact, start with us and we'll connect you to the right person.

 1800 716 866

 enquiries@homes.vic.gov.au

Your Relocations Team

Speak to your relocation officer if you have questions about your relocation, want to submit or update your relocation application, or want to know about homes that are available.

 relocationsteam@homes.vic.gov.au




Scan to read this document in your language



Health and wellbeing support

Our health partners can provide more information about how your health needs will be supported during relocation.


Better Health Network

 132 246

 www.bhn.org.au


Support with resident rights

Tenants Victoria – tenancy and legal information

 1800 068 860

 www.tenantsvic.org.au

Victorian Public Tenants Association – advocacy and support

 1800 015 510

 www.vpta.org.au

Community legal centres – free, confidential legal help

Find your local community legal centre at www.fclc.org.au/find_a_community_legal_centre