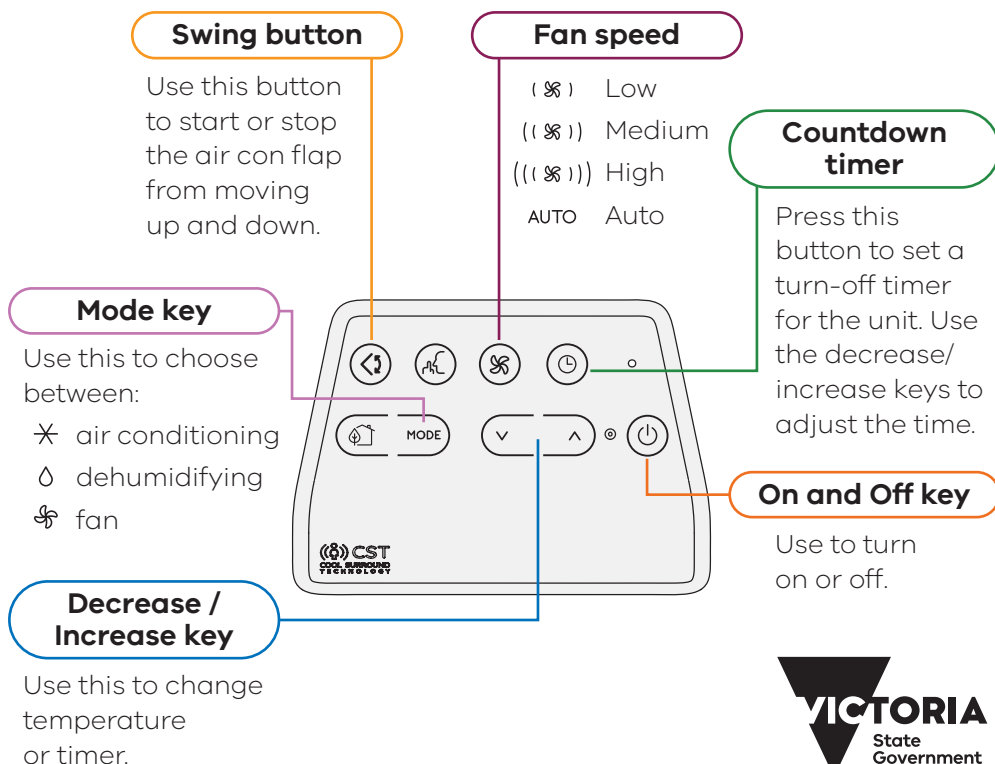


Using your DeLonghi (PAC EL112 CST)

A brief how to guide



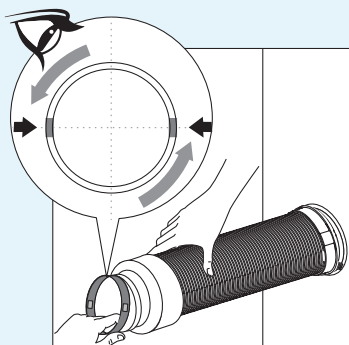
Moving your air con

If you have **more than one core hole**, you can move your air con between the two core holes. To do this:

1



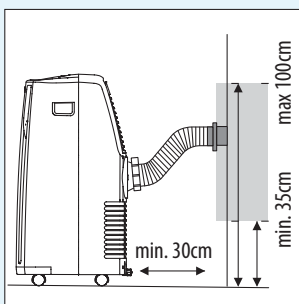
Twist the air vent tube anti-clockwise to release the tube from the core hole.



2



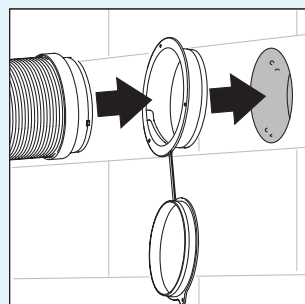
Move the air con where you want it to be.



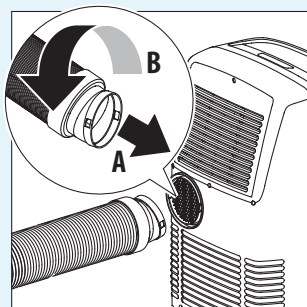
3



Twist the air vent tube clockwise into the core hole to secure.



If your **air vent tube comes out of the unit**, reattach it by twisting the tube clockwise into the hole on the air conditioner.



Maintenance issues:

Contact the **Housing Call Centre on 13 11 72** or your **local housing office** for any faults or maintenance issues with your air conditioning.

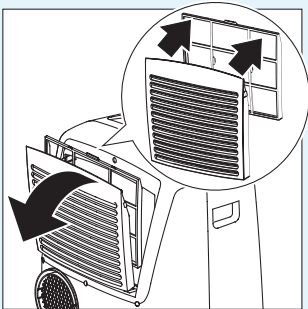
Maintenance

Cleaning the filter


Cleaning the filter regularly means the unit will work better and last longer.

Use a vacuum or warm water (below 40°C) to clean it.

Let it dry completely before reinstalling.

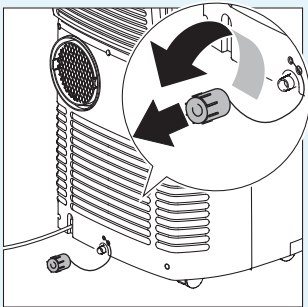



Most common error messages

IF ... IS DISPLAYED,

"High Level" (Internal tray full)
..WHAT SHOULD I DO?

Draining water from the machine

- Put a bucket or tray under the machine.
- Unscrew and remove the cap.
- Drain the water.
- Replace the cap.
- Clean the filter.



IF ... IS DISPLAYED,

"Communication Failure" (Internal communication issue)
..WHAT SHOULD I DO?

Communications failure

1. Unplug machine from wall socket for 15 seconds.
2. Plug back in and turn on.
3. If the problem isn't solved, contact maintenance.

Air conditioner tips and tricks

- ✓ Use Air conditioning mode on your unit to cool your home and get the best cooling.
- ✓ Make sure the air conditioner is standing on a level surface.
- ✓ For comfort and efficiency, set your air conditioner to 24–26°C. Lower temperature settings use more energy and cost you more.
- ✓ Don't block the air intake or outlet flap.
- ✓ Close windows when using the air-conditioning unit.
- ✓ Block out the sun at home during the day by closing curtains and blinds.
- ✓ Do not place heavy objects on this unit.
- ✓ To save energy and money, adjust your air-conditioning unit throughout the day:
 - Pre-cool your home earlier in the day on hot days,
 - At the hottest part of the day, set the air con to a higher temperature.

Have a question?

- @ HighRiseCooling@homes.vic.gov.au
- 📞 1800 519 721
- 🌐 www.homes.vic.gov.au/cooling-our-high-rise-towers