

Tuesday 11 March 2025

### **Important update on the next steps for 33 Alfred St, North Melbourne**

We want to keep you up to date at each stage of the redevelopment. This letter includes information about:

- Our plan to build more and better homes at North Melbourne
- Where to find our staff
- Where to learn more about the redevelopment

#### **Observing Ramadan**

- We understand and respect that many in our community are currently observing Ramadan.
- We will be holding community information sessions about these next steps in April (after Ramadan).
- Posters will be placed in your building foyer with dates and times of these sessions.
- If you would like to talk to us before then, our staff will be at the North Melbourne housing office on Thursday 13 March 9:00am - 5:00pm.

**Scan for translated information in your language**



#### **Thank you to everyone who shared their ideas during December**

Thank you to everyone who shared their feedback and ideas for the future of 33 Alfred Street, as part of community engagement in December.

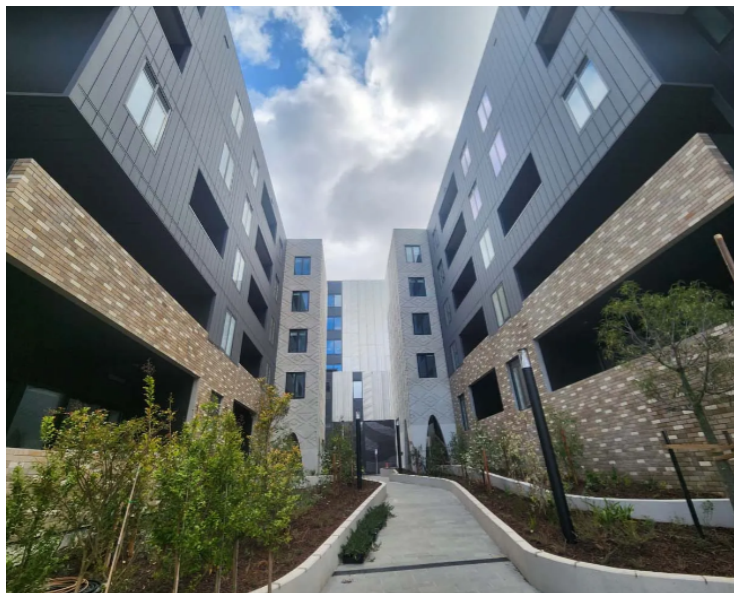
Your feedback will inform designs for the new buildings and community spaces.

- We heard from 165 renters about what was important to them in future homes, buildings, community spaces and neighbourhoods.
- We heard your feedback on the need to develop new buildings and outdoor areas that are safe, well-designed and community focused.

- We also heard about the need to provide homes for families of all sizes.

### **We are now seeking a project partner to submit a plan for this redevelopment**

We are now seeking a project partner to put forward a proposal to build and manage around 800 new homes, including around 300 social homes, at 33 Alfred Street, North Melbourne. All land will remain in public ownership.



*New, energy-efficient homes built at Abbotsford St North Melbourne opened in 2025.*

The partner will have experience in building and managing social, affordable and market rental housing.

A strict evaluation process will assess each proposal on its merits.

By working with a project partner, we can deliver more modern, well-designed and energy efficient homes for more Victorians, close to schools, services and transport - like the recently completed new homes at Abbotsford Street (pictured left).

### **More opportunities to have your say**

As we work with a project partner to develop designs of new homes, buildings and community spaces, you will have more opportunities to see designs and provide feedback.

### **Where to find our team**

If you have any questions or would like to talk to our team, we will be at the North Melbourne housing office Thursday 13 March 9:00am - 5:00pm.

### **Stay up to date**

Visit: <https://bighousingbuild.homes.vic.gov.au/precincts/north-melbourne-precinct> for information and updates including materials in your language.

[www.homes.vic.gov.au](http://www.homes.vic.gov.au)



@homesvic

