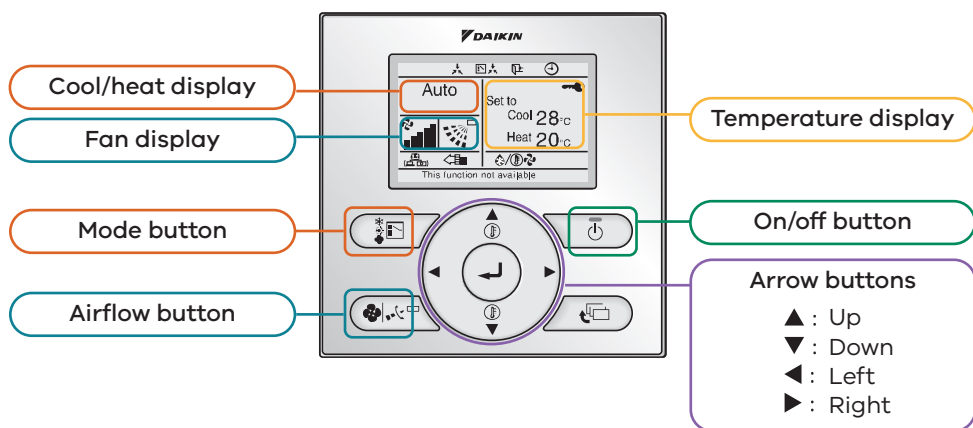


# How to use a DAIKIN wall mount control



## General information

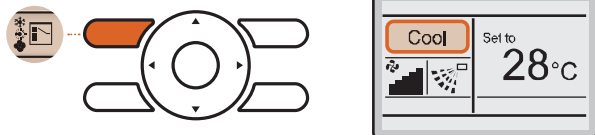
- On very cold mornings, it can take up to 25 minutes for the unit to defrost and begin blowing warm air after it's turned on.
- The thermostat will make the unit turn off and on to keep the room at the selected temperature.

## Turning the unit on and off

1. Turn on the unit by pressing the on/off button once (a green light will indicate the unit is on).
2. Once on, to turn off, press the on/off button once.

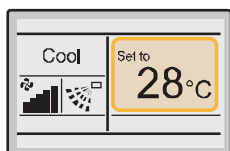
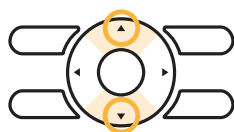
## How to select the cooling or heating mode

1. Press the **Mode** button several times until either **Cool** or **Heat** is selected (ignore the other options).



## How to change the temperature

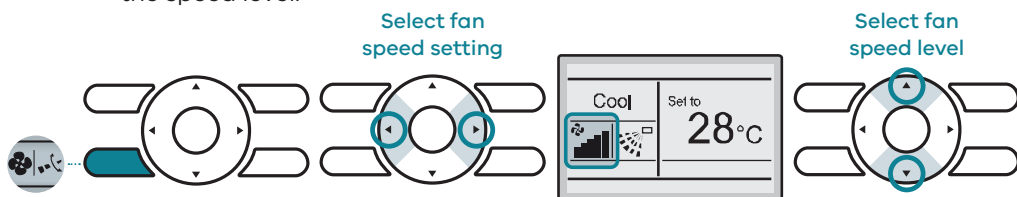
1. Select the temperature setting by pressing either the **▲ up** or **▼ down arrow**.
2. Pressing the **▲ up arrow** increases the temperature and pressing the **▼ down arrow** decreases the temperature.



\* A comfortable temperature is typically between 18–24 degrees.

## How to select the fan speed

1. Press **Airflow** setting button in the lower left hand corner.
2. Use **◀ left and ▶ right arrows** to select either fan speed or fan direction.
3. When selecting the fan speed, the **▲ up and ▼ down arrows** select the speed level.



**Find out more:** You can access the full instruction manual for the wall mount control at the following web site:

<https://tinyurl.com/58r8u5nf>

